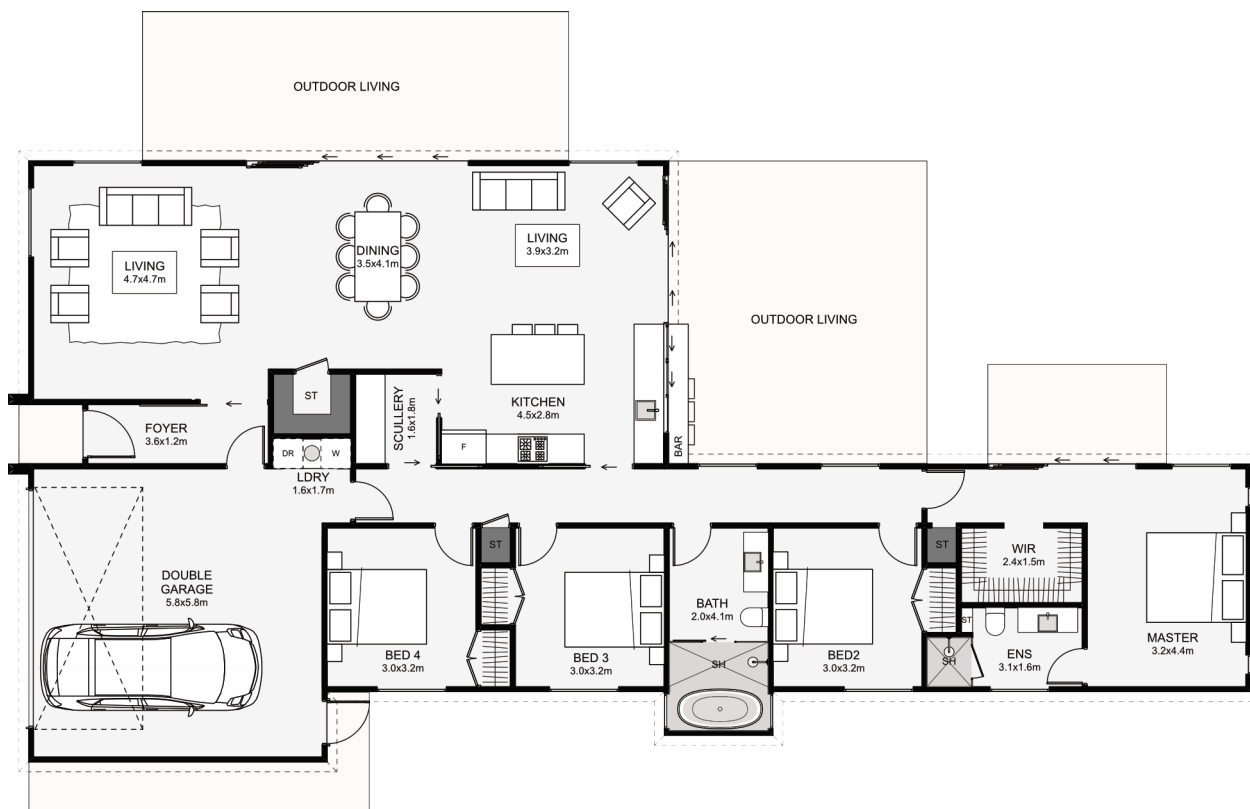




Low maintenance and modern, this home is also full of great features! Inside you will enjoy, dual living, lots of storage, a scullery, an optional outdoor bar, a modern bathroom layout and a large walk-in wardrobe. This home would be great for a family or an investment home!



Floor Area: 199m²  2  4  2  2  25.0m  12.1m

Contact us
 Ph: 027 432 4173
 E: admin@cwsconstruction.co.nz
www.cwsconstruction.co.nz

