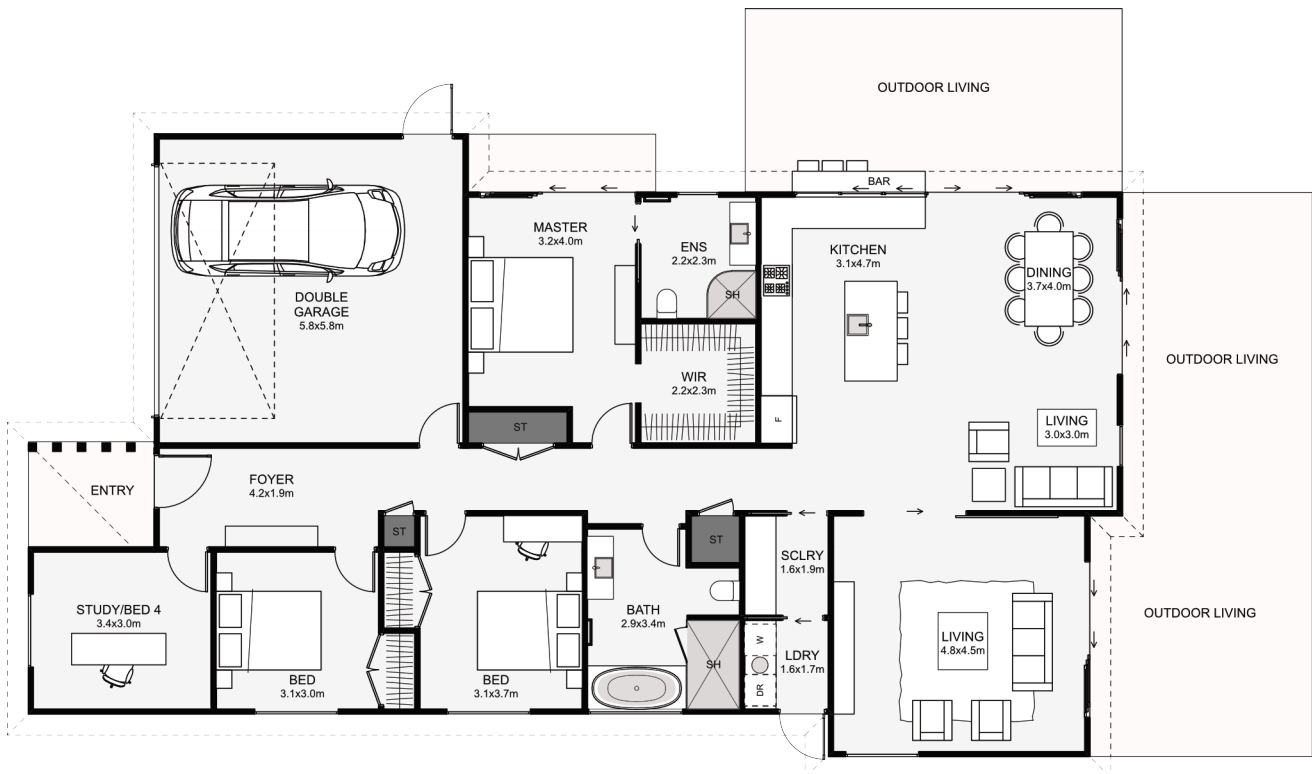




If your section has a southern entry point, read on! The main living, dining and kitchen are positioned for a great northern outlook with the optional outdoor kitchen bar for evenings with family and friends. Some other great features include the dual living, the master's large walk-in wardrobe, one extra wide bedroom which could easily fit a desk and an optional study close to the front door if you plan on working from home!



Floor Area: 199m<sup>2</sup>  2  4  2  2  20.9m  11.9m

Contact us

Ph: 027 432 4173

E: admin@cwsconstruction.co.nz

[www.cwsconstruction.co.nz](http://www.cwsconstruction.co.nz)



**CWS CONSTRUCTION**